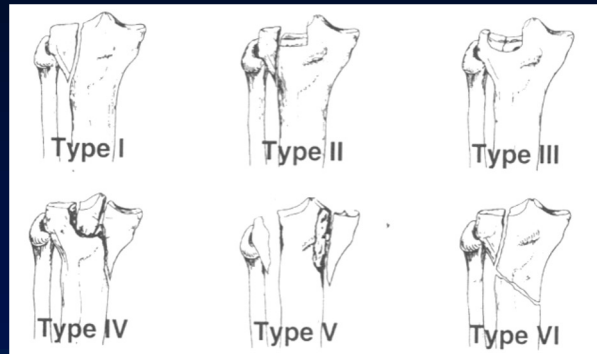


# Tibial Plateau Fractures

## Simple Clinical Cases



*François Kelberine*

*Aix en Provence - France*  
*Gap - France*

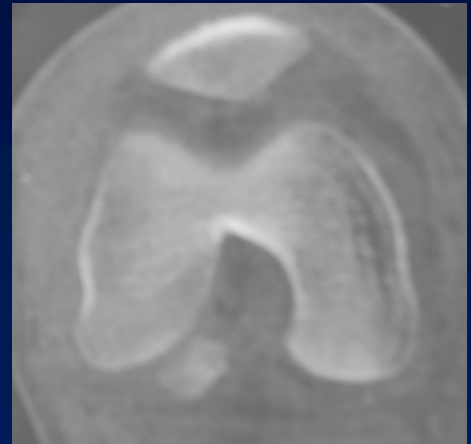
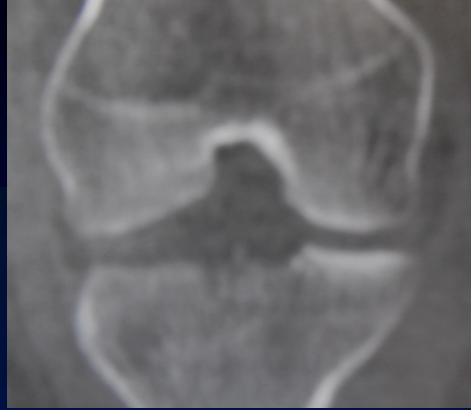
# Case # 1

✓Female MD 50 y

✓Slide on ice spot

✓X - rays

✓Additional imaging?

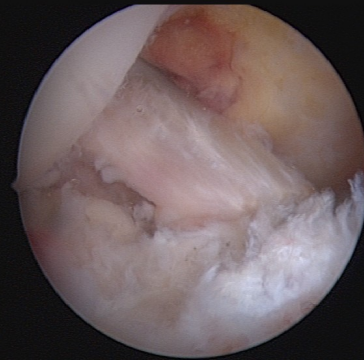
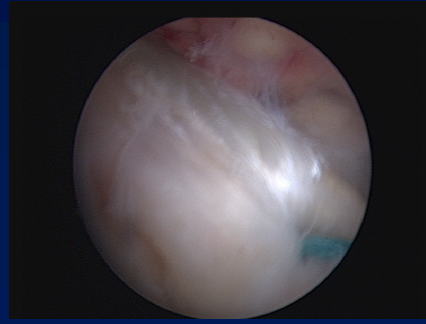
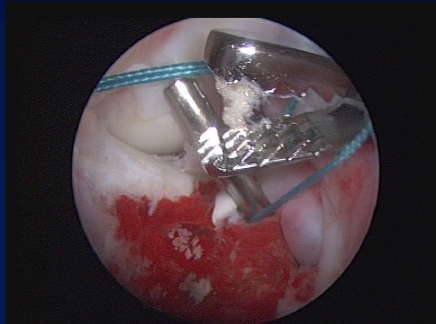
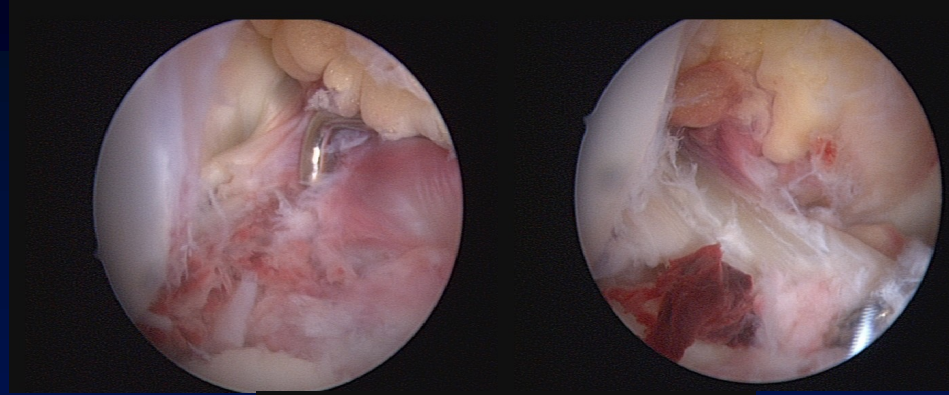


✓ Largely displaced ant spine avulsion

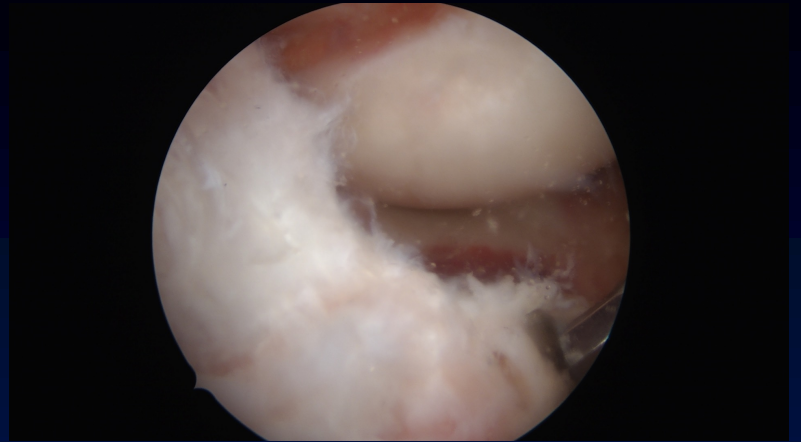
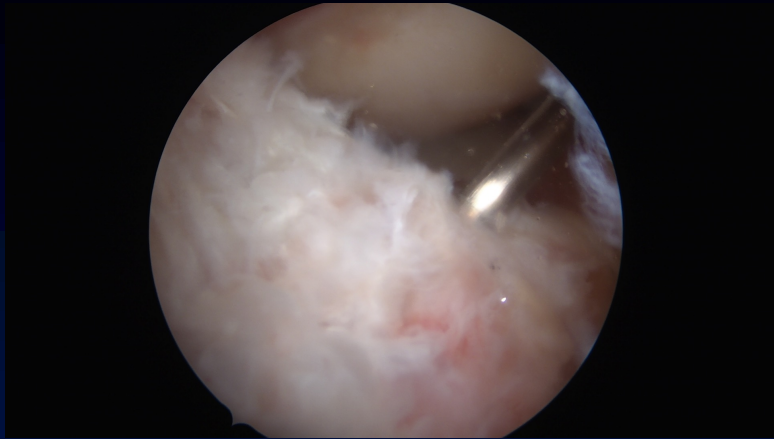
✓ Treatment

✓ Open or Arthroscopic?

✓ Fixation ?



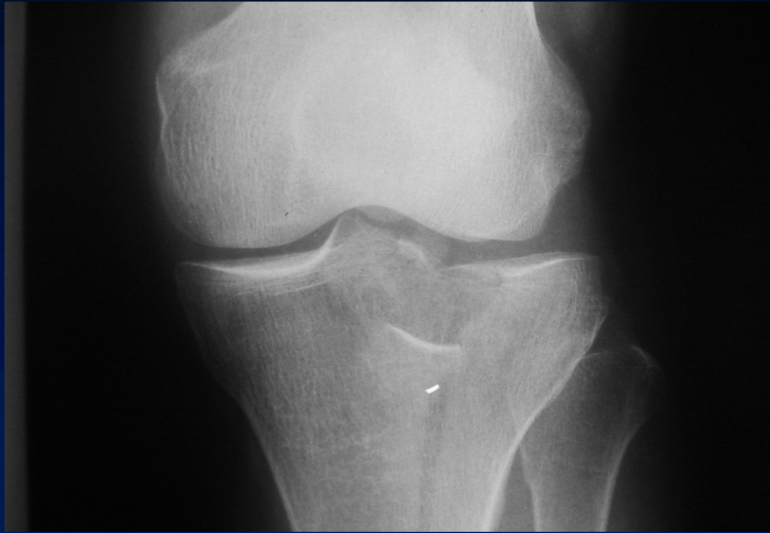
# Postop course?



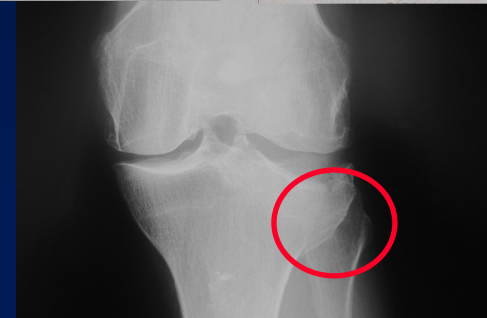
Full WB with splint  
Early mobilization

## Case # 2

✓ Male 24 y, Axial fall @ climbing activities : Type?



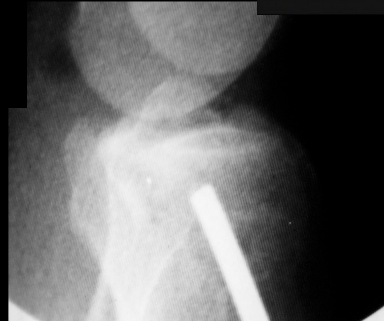
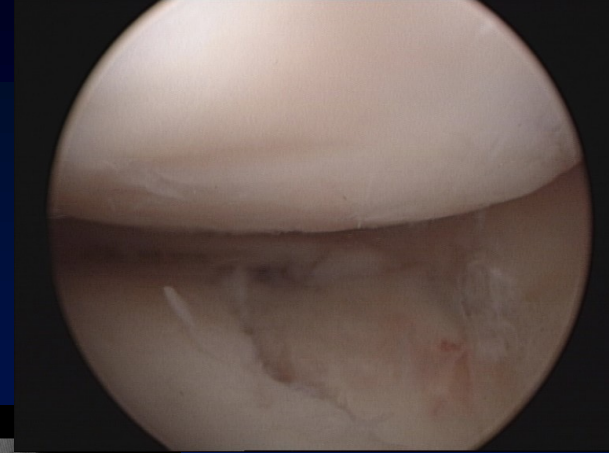
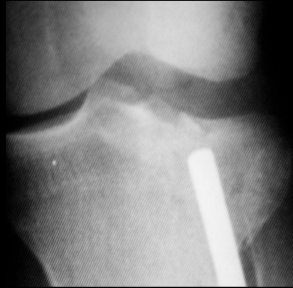
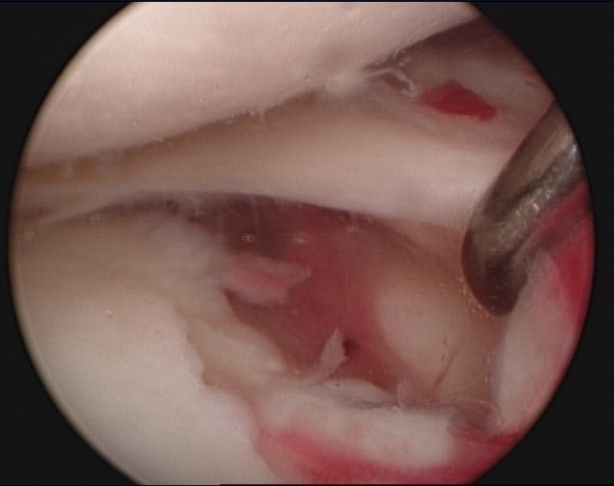
✓ Treatment?





# Arthroscopic treatment

✓ low aggressive surgery / vascularity  
Reduction / X-rays and direct view

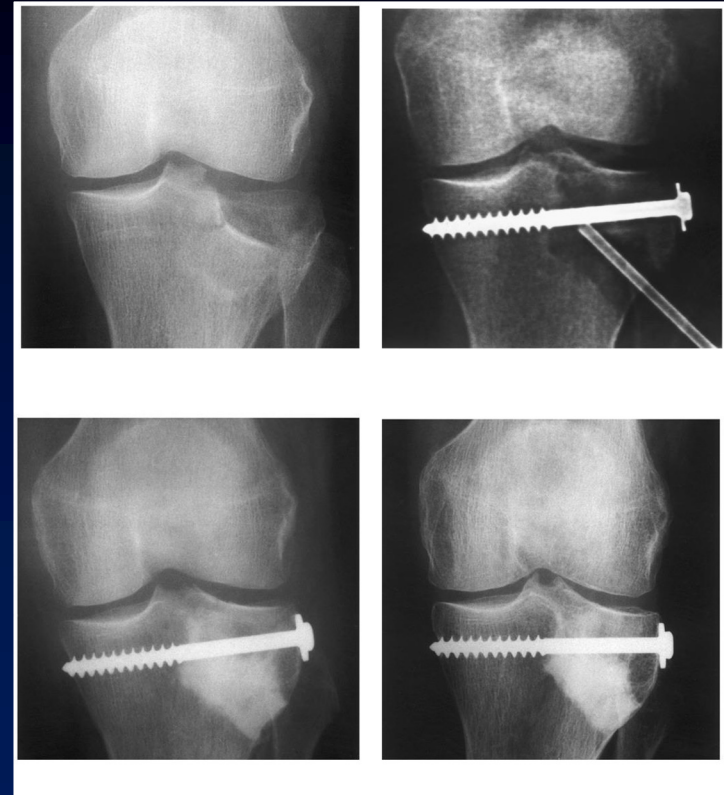


# Stabilization

- ✓Nothing (almost autograft)
- ✓Bone substitute
- ✓Cement

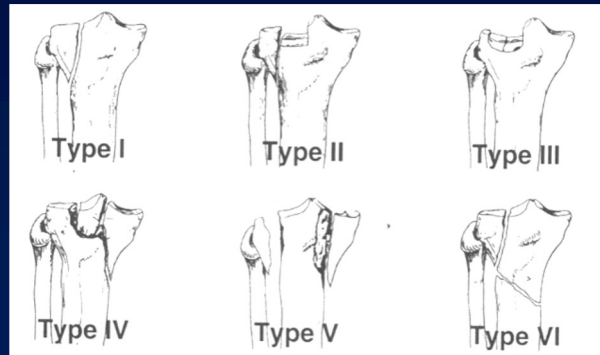
## Post op course

- ✓Partial WB (lateral plateau)
- ✓Early mobilization

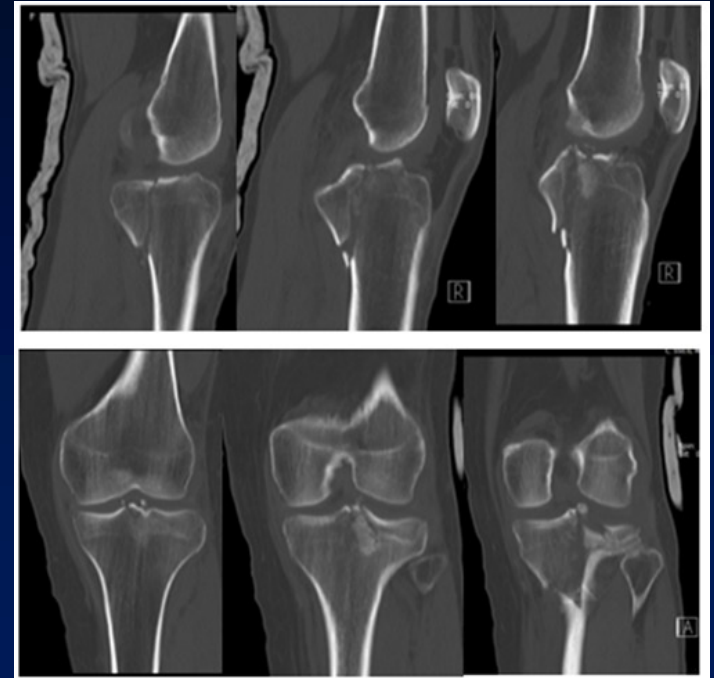


## Case # 3

- ✓ Male 38 y : Jump from the 3rd floor
- ✓ Intensive Care Unit @ day3
- ✓ Complex fracture : type?



✓ Issues?





✓Skin



✓Risk of compartment syndrom

✓Timing of surgery?

✓Fast post approach

✓Delayed lateral approach

